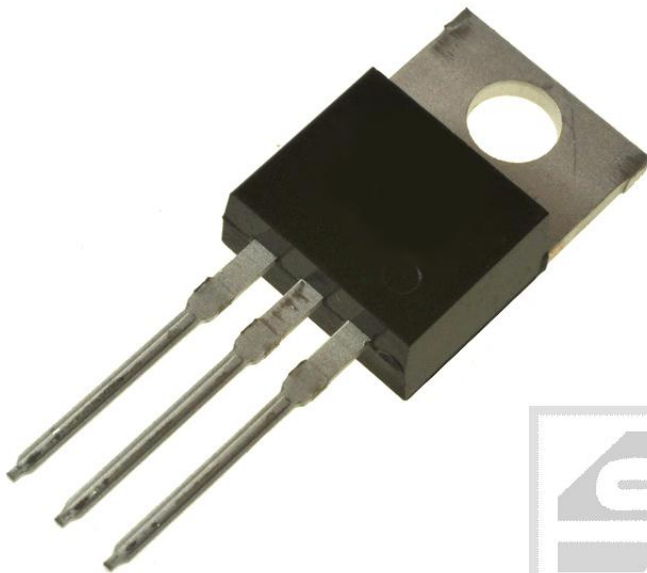




Dioda FEP16CT;GI;TO220AB;16A;150V; 35ns;Podwójna wspólna katoda



Dane techniczne:

Nazwa: FEP16CT

Typ: dioda szybka

Podwójna wspólna katoda

Napięcie wsteczne maksymalne: 150V

Prąd przewodzenia: 16A

Czas gotowości: 35ns

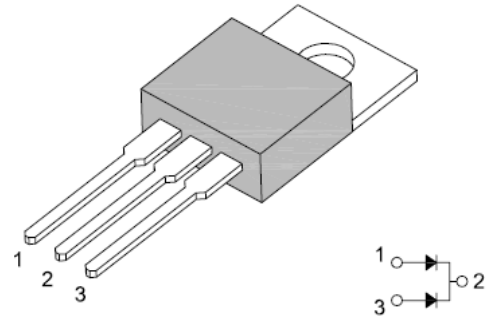
Obudowa: TO220AB

Montaż: przewlekany(THT)

16A Super Fast Recovery Rectifiers

Features

- Glass passivated chip junction
- Super fast recovery times, high voltage
- Low power loss, high efficiency
- Low forward voltage, high current capability
- High surge current capability
- RoHS Compliance



TO-220



Mechanical Data

Case:	TO-220, molded plastic
Epoxy:	Plastic package has UL flammability classification 94V-0
Terminals:	Lead, solderable per MIL-STD-202, Method 208
Polarity:	As marked
Mounting Torque:	10 in-lbs maximum
Weight:	0.08 ounces, 2.24 grams

Maximum Ratings and Electrical Characteristics ($T_A=25^{\circ}\text{C}$ unless noted otherwise)

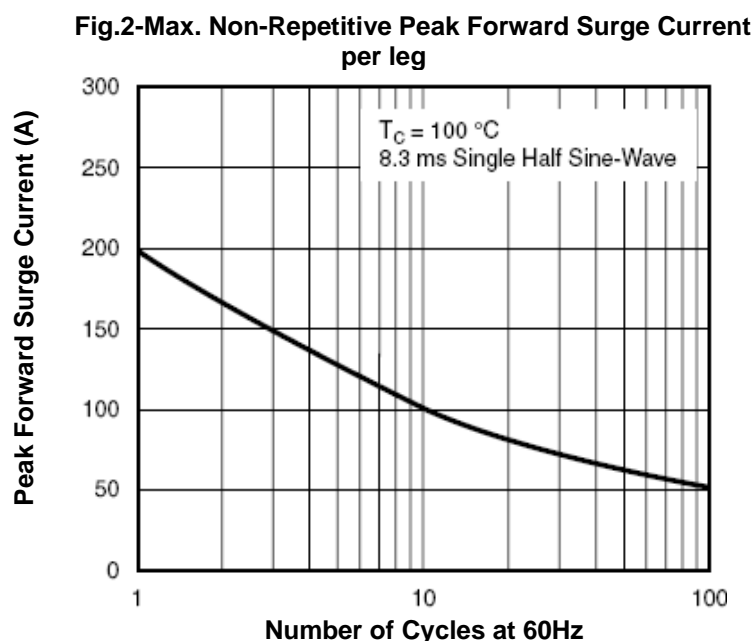
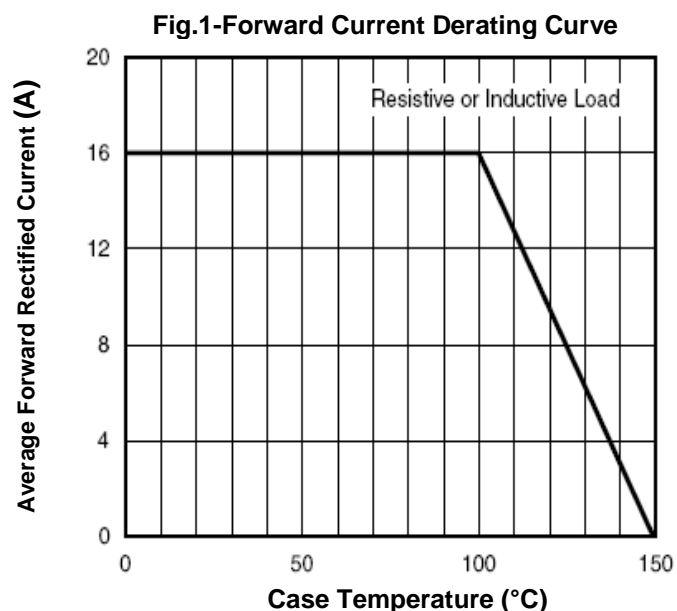
Symbol	Description	FEP 16AT	FEP 16BT	FEP 16CT	FEP 16DT	FEP 16FT	FEP 16GT	FEP 16HT	FEP 16JT	Unit	Conditions
VRRM	Maximum Repetitive Peak Reverse Voltage	50	100	150	200	300	400	500	600	V	
VRMS	Maximum RMS Voltage	35	70	105	140	210	280	350	420	V	
VDC	Maximum DC Blocking Voltage	50	100	150	200	300	400	500	600	V	
IF(AV)	Maximum Average Forward Rectified Current	16								A	$T_C=100^{\circ}\text{C}$
IFSM	Peak Forward Surge Current per leg	200								A	8.3ms single half sine-wave superimposed on rated load (JEDEC Method)

16A Super Fast Recovery Rectifiers

FEP16AT - FEP16JT

Symbol	Description	FEP 16AT	FEP 16BT	FEP 16CT	FEP 16DT	FEP 16FT	FEP 16GT	FEP 16HT	FEP 16JT	Unit	Conditions	
V_F	Maximum Instantaneous Forward Voltage per leg	0.95			1.30		1.50			V	I _F =8.0A	
I_R	Maximum DC Reverse Current at Rated DC Blocking Voltage	10									μA	T _C =25° C
		500										T _C =100° C
T_{rr}	Typical Reverse Recovery Time per leg	35			50						nS	I _F =0.5A, I _R =1A, I _{rr} =0.25A
C_J	Typical Junction Capacitance per leg	85						60			pF	V _R =4V, f=1MHz
R_{thJC}	Typical Thermal Resistance from Junction to Case per leg	2.2									° C/W	
T_J, T_{STG}	Operating Junction and Storage Temperature Range	-55 to +150									° C	

Typical Characteristics Curves



16A Super Fast Recovery Rectifiers

FEP16AT - FEP16JT

Fig.3- Typical Forward Characteristics per leg

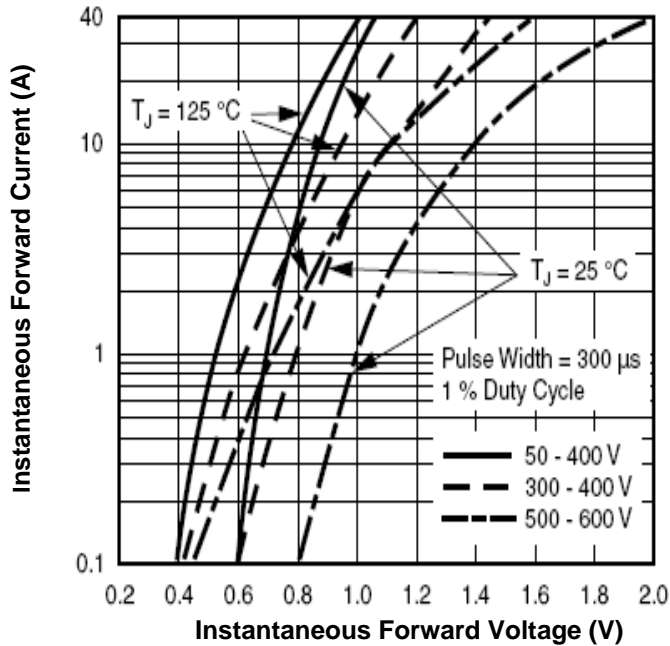


Fig.4-Typical Reverse Characteristics per leg

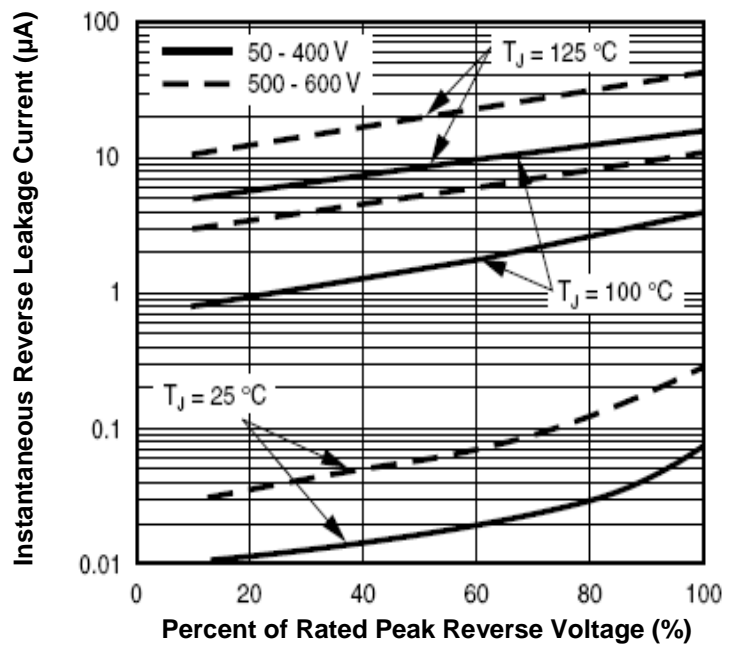
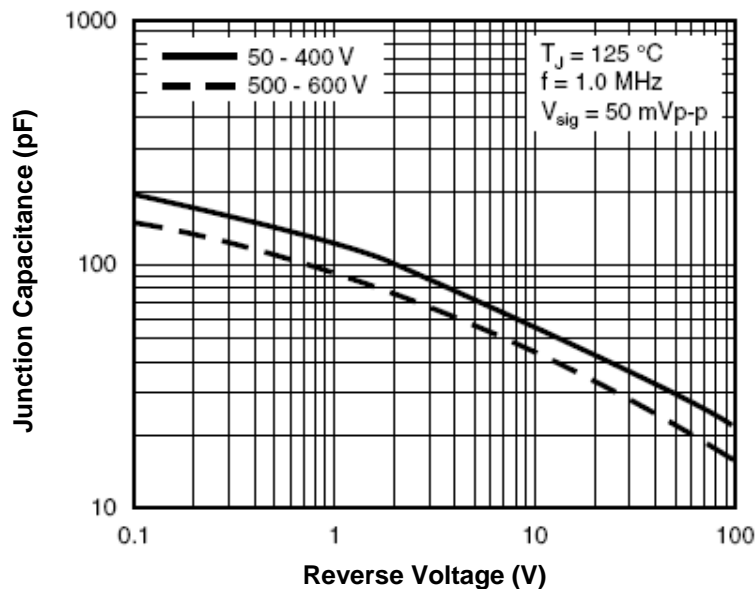


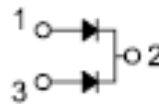
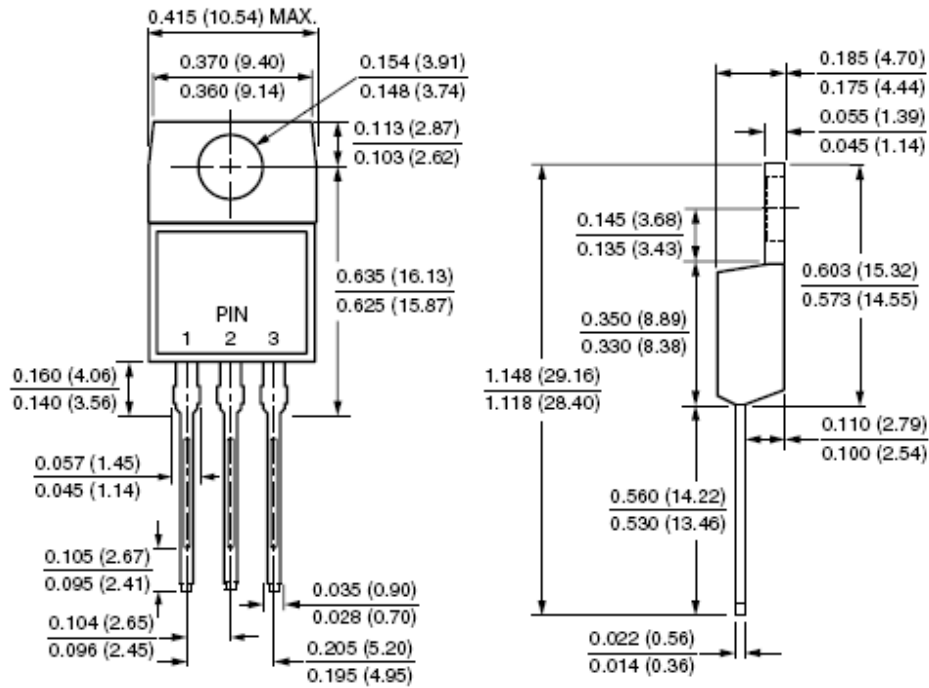
Fig.5- Typical Junction Capacitance per leg



16A Super Fast Recovery Rectifiers

FEP16AT - FEP16JT

Dimensions in inches (mm)



TO-220

16A Super Fast Recovery Rectifiers

FEP16AT - FEP16JT

How to contact us:

US HEADQUARTERS

28040 WEST HARRISON PARKWAY, VALENCIA, CA 91355-4162

Tel: (800) TAITRON (800) 824-8766 (661) 257-6060

Fax: (800) TAITFAX (800) 824-8329 (661) 257-6415

Email: taitron@taitroncomponents.com

Http://www.taitroncomponents.com

TAITRON COMPONENTS MEXICO, S.A .DE C.V.

BOULEVARD CENTRAL 5000 INTERIOR 5 PARQUE INDUSTRIAL ATITALAQUIA, HIDALGO C.P.
42970 MEXICO

Tel: +52-55-5560-1519

Fax: +52-55-5560-2190

TAITRON COMPONETS INCORPORATED E REPRESENTAÇÕES DO BRASIL LTDA

RUA DOMINGOS DE MORAIS, 2777, 2.ANDAR, SALA 24 SAÚDE - SÃO PAULO-SP 04035-001 BRAZIL

Tel: +55-11-5574-7949

Fax: +55-11-5572-0052

TAITRON COMPONETS INCORPORATED, SHANGHAI REPRESENTATIVE OFFICE

METROBANK PLAZA, 1160 WEST YAN' AN ROAD, SUITE 1503, SHANGHAI, 200052, CHINA

Tel: +86-21-5424-9942

Fax: +86-21-5424-9931