



# Dioda LED Super Flux 5mm czerwona OSR5PAZE31D OPTOSUPPLY



## **Dane techniczne:**

Nazwa: OSR5PAZE31D OPTOSUPPLY

Prąd diody LED: 50mA

Napięcie diody LED: 2V

Jasność: 12000mcd

Kolor diody LED: czerwony

Kąt świecenia: 30°

Długość fali: 625nm

**■Features**

- High Luminous Super Flux Output
- 4.55  $\phi$  Standard Directivity
- Long Lifetime Operation
- Low Thermal Resistance  
Superior Weather-Resistance
- UV Resistant Epoxy
- Water Clear Type

**■Applications**

- Automotive tail, stop, turn signal lamps and interior lighting
- Signage and channel letter
- Decoration and entertainment lighting
- Architectural lighting
- Other Lighting

**■Absolute Maximum Rating**

(Ta=25°C)

Item	Symbol	Value	Unit
DC Forward Current	I <sub>F</sub>	50	mA
Pulse Forward Current*	I <sub>FP</sub>	120	mA
Reverse Voltage	V <sub>R</sub>	5	V
Power Dissipation	P <sub>D</sub>	130	mW
Operating Temperature	T <sub>opr</sub>	-30 ~ +85	°C
Storage Temperature	T <sub>stg</sub>	-40 ~ +100	°C
Lead Soldering Temperature	T <sub>sol</sub>	260°C/5sec	-

\*Pulse width Max.10ms Duty ratio max 1/10

**■Electrical -Optical Characteristics**

(Ta=25°C)

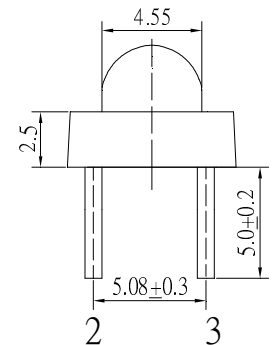
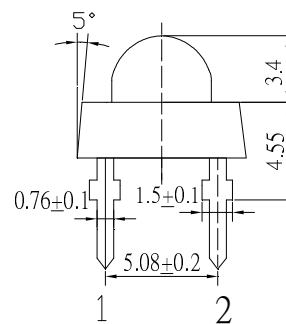
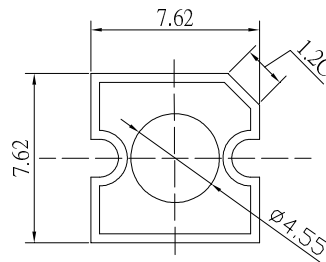
Item	Symbol	Condition	Min.	Typ.	Max.	Unit
DC Forward Voltage	V <sub>F</sub>	I <sub>F</sub> =50mA	1.8	2.1	2.6	V
DC Reverse Current	I <sub>R</sub>	V <sub>R</sub> =5V	-	-	10	μA
Domi. Wavelength*	λ <sub>D</sub>	I <sub>F</sub> =50mA	620	625	630	nm
Luminous Intensity*	I <sub>v</sub>	I <sub>F</sub> =50mA	10000	12000	-	mcd
50% Power Angle	2θ <sub>1/2</sub>	I <sub>F</sub> =50mA	-	30	-	deg

\*1 Tolerance of measurements of dominant wavelength is ±1nm

\*2 Tolerance of measurements of luminous intensity is ±15%

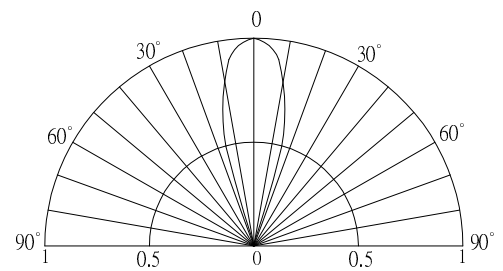
\*3 Tolerance of measurements of forward voltage is ±0.1V

**■Outline Dimension**



Unit:mm  
Tolerance:±0.3mm  
1,4 Cathode  
2,3 Anode

**■Directivity**



**■Maximum Forward Current**

