



ROBERT STĘPIEŃ  
HURTOWNIA CZĘŚCI ELEKTRONICZNYCH  
podzespoly-elektroniczne.pl

# Dioda LED Super Flux 3mm biała zimna LUW106B3



## **Dane techniczne:**

Nazwa: LUW106B3

Prąd diody LED: 80mA

Napięcie diody LED: 3.0-3.1V

Jasność: 4200-5500mcd

Kolor diody LED: biały zimny

Kąt świecenia: 120°

[www.podzespoly-elektroniczne.pl](http://www.podzespoly-elektroniczne.pl)

Robert Stępień Hurtownia Części Elektronicznych; Adres: ul. Wolumen 2, pawilon 71; 01-912 Warszawa; tel.: 601 296 402 /  
sklep@podzespoly-elektroniczne.pl

---

**SPECIFICATIONS FOR HIGH FLUX  
LED LAMPS**

**LUW106 Series**

**WENRUN OPTOELECTRONIC**

---

**Features:**

- High speed response.
- High reliability and long life.
- Low power consumption.
- Suitable for pulse operation.



**Descriptions:**

- The series specially designed for applications requiring higher brightness.
- Superior performance in outdoor environment.

**Applications:**

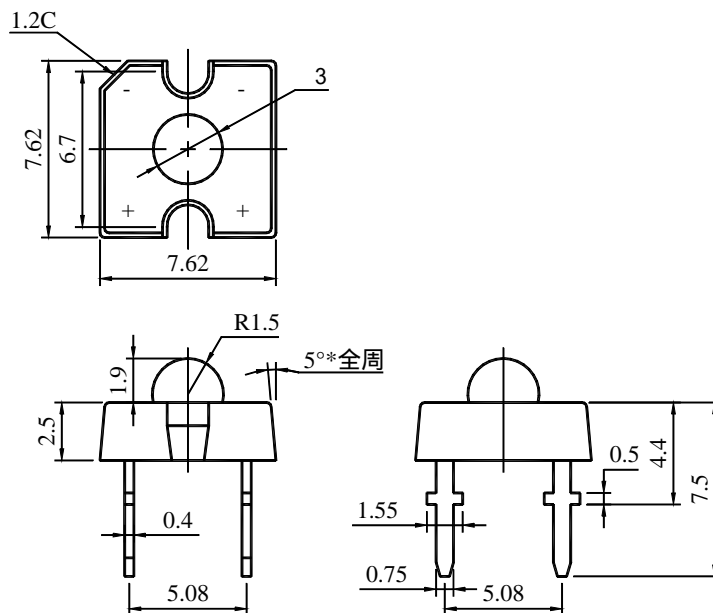
- Automotive exterior lighting.
- Solid state lighting and signaling.

**Selection Guide:**

Part No.	Chip		Lens Type
	Material	Emitting Color	
LUW106B3	InGaN	Ultra Super White	Water Clear

\*Pay attention to electrostatic ( ESD )

**Package Dimensions:**



**NOTES :**

- 1、 All dimensions are in millimetres (mm).
- 2、 Tolerance is  $\pm 0.25\text{mm}(0.01\text{'})$  unless otherwise noted.
- 3、 Protruded resin under flange is 1.5mm Max LED.

**Absolute Maximum Rating ( Ta=25 )**

Parameter	Symbol	Ultra Super White	Unit
Power Dissipation	$P_d$	90	mW
Pulse Forward Current (Duty 1/10 @ 1kHz)	$I_{FP}$	80	mA
DC Forward Current	$I_F$	20	mA
Reverse Voltage	$V_R$	5	V
Operating Temperature Range	$T_{opr}$	-30 ~ +85	
Storage Temperature Range	$T_{stg}$	-40 ~ +100	
Soldering Temperature	$T_{sol}$	$260 \pm 5$	

**Notes :** Soldering time 5 seconds.

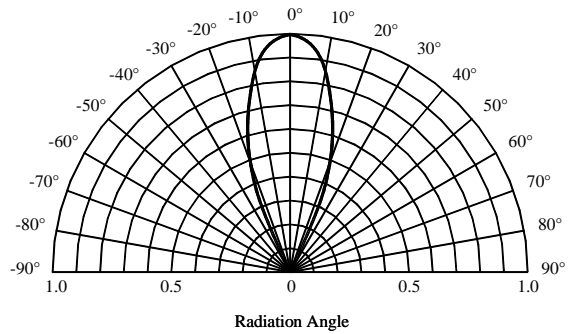
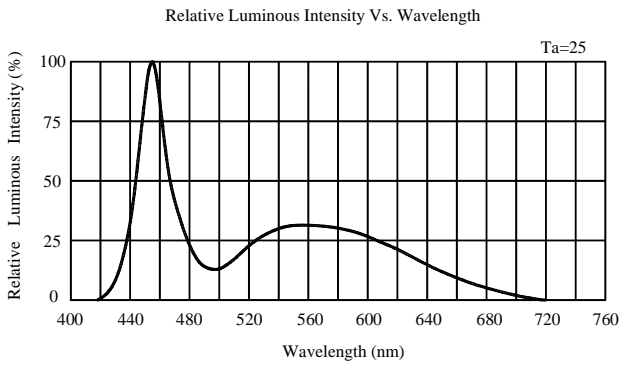
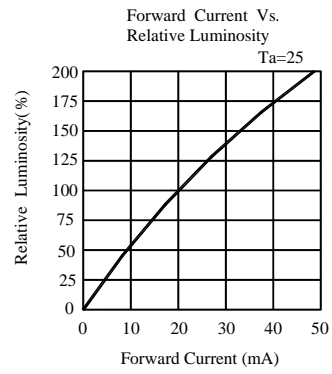
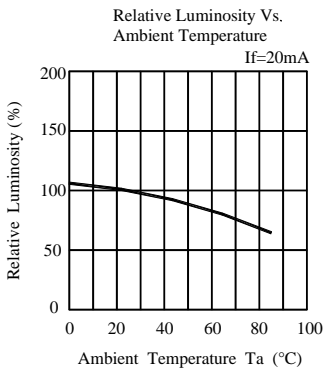
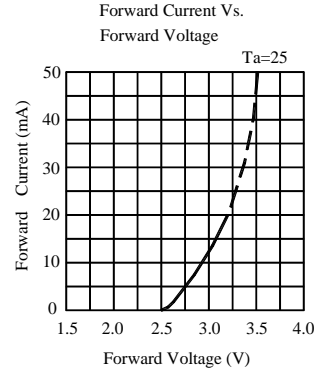
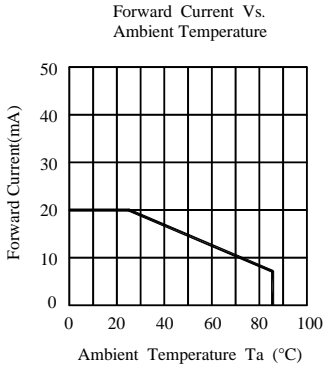
**Electrical Optical Characteristics ( Ta=25 )**

Parameter	Symbol	Ultra Super White		Unit	Test Condition
		Typ.	Max.		
Luminous Intensity	I <sub>V</sub>	2500	--	mcd	I <sub>F</sub> =20mA
Forward Voltage	V <sub>F</sub>	3.2	3.8	V	I <sub>F</sub> =20mA
Reverse Current	I <sub>R</sub>	--	50	uA	V <sub>R</sub> =5V
Viewing Angle	2 1/2	40	--	deg	I <sub>F</sub> =20mA
Chromaticity Coordinate	x	--	0.28	--	I <sub>F</sub> =20mA
	y	--	0.29	--	I <sub>F</sub> =20mA

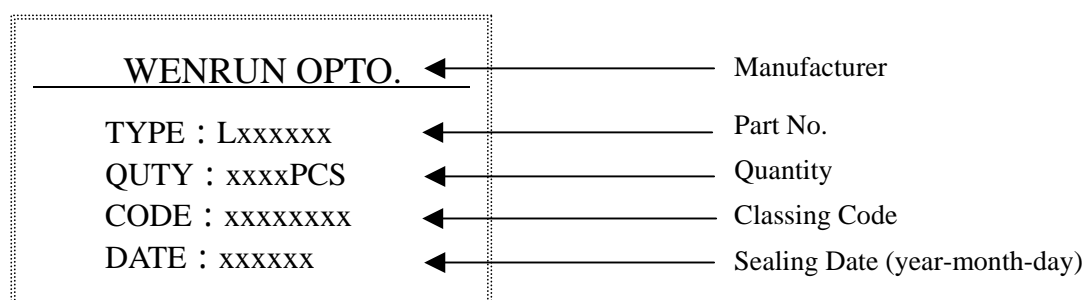
**Reliability Test Items and Conditions**

NO	Test Item	Test Conditions	Duration	Sample	Ac/Re
1	Temperature Cycle	-40 ~ 25 ~ 100 ~ 25 30min 5min 30min 5min	50cycles	100	0/1
2	High Temp. Storage	Ta=100	1000hours	100	0/1
3	Temp.& Humidity Test	Ta=85 RH=85%	1000hours	100	0/1
4	Low Temp. Storage	Ta=-40	1000hours	100	0/1
5	Operating Life Test	Ta=25 ± 5 DC IF=20mA	1000hours	100	0/1
6	Solder Heat	Tsol=260 ± 5 , 5s	1times	20	0/1

Typical Electro-Optical Characteristics Curves :



## Label Form Specification



## Precautions In Use

### A、Soldering Conditions

- Maximum allowable soldering conditions are.
  - Solder dipping: 260 max., 5 seconds max., one time.
  - Soldering iron: 350 max., 5 seconds max., one time.
- In soldering, do not put any stress on the lead frame, particularly when heated.

### B、Lead frame Forming and Use

- When mounting the LEDs onto a printed circuit board, the holes on the circuit board should be exactly aligned with the leads of the LEDs.
- Please avoid conditions which may cause the LED to corrode, tarnish or discolor. This corrosion or discoloration may cause difficulty during soldering operations. It is recommended that the LEDs be used as soon as possible.
- Please avoid rapid transitions in ambient temperature, especially, in high humidity environments.

### C、Static Electricity

- These products are sensitive to static electricity charge, and users are required to handle with care. Particularly, if an current and or voltage which exceeds the Absolute Maximum Rating of Products is applied, the overflow in energy may cause damage to, or possibly result in electrical destruction of, the Products. The customer is requested to take adequate countermeasures against static electricity charge and surge when handling Products.
- Proper grounding of Products, use of conductive mat, conductive working uniform and shoes, and conductive containers are effective against static electricity and surge.
- Ground low-resistance areas where the product contacts, such as metal surfaces of the work platform, with a conductive mat (surface resistance  $10^6$ - $10^8$  ).
- A tip of soldering iron is requested to be grounded. An ionizer should also be installed where risk of static generation is high.

**Notes:**

- 1、 Above specification may be changed without notice. We will reserve authority on material change for above specification.
- 2、 When using this product, please observe the absolute maximum ratings and the instructions for the specification sheets. We assume no responsibility for any damage resulting from use of the product which does not comply with the instructions included in the specification sheets.