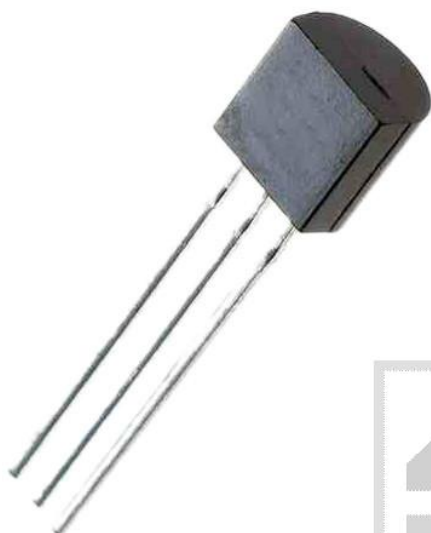




TR BF241;CDIL;TO92;tranzystor; NPN;25mA;40V;300mW;400MHz



Dane techniczne:

Nazwa: BF241

Typ tranzystora: bipolarny

Kierunek przewodnictwa: NPN

Prąd kolektora: 25mA

Napięcie kolektor-emiter: 40V

Moc: 300mW

Częstotliwość: 400MHz

Montaż: przewlekany(THT)

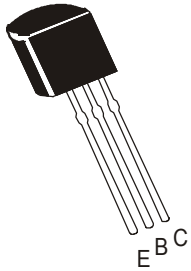
Obudowa: TO92

Producent: CDIL

NPN SILICON PLANAR EPITAXIAL RF TRANSISTORS

BF240

BF241



TO-92

Plastic Package

A.M.Mixer, IF Amplifiers in AM/ FM Receiver Applications

ABSOLUTE MAXIMUM RATINGS(Ta=25°C unless otherwise specified)

DESCRIPTION	SYMBOL	Value	UNITS
Collector Emitter Voltage	V_{CEO}	40	V
Collector Base Voltage	V_{CBO}	40	V
Emitter Base Voltage	V_{EBO}	4	V
Collector Current Continuous	I_C	25	mA
Power Dissipation@ Ta=25°C	P_D	350	mW
Dereate Above 25 deg C		2.8	mW/ °C
Power Dissipation@ Tc=25°C	P_D	1	W
Dereate Above 25°C		8.0	mW/ °C
Operating and Storage Junction Temperature Range	T_j, T_{stg}	-55 to +150	°C

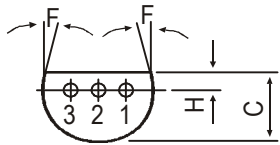
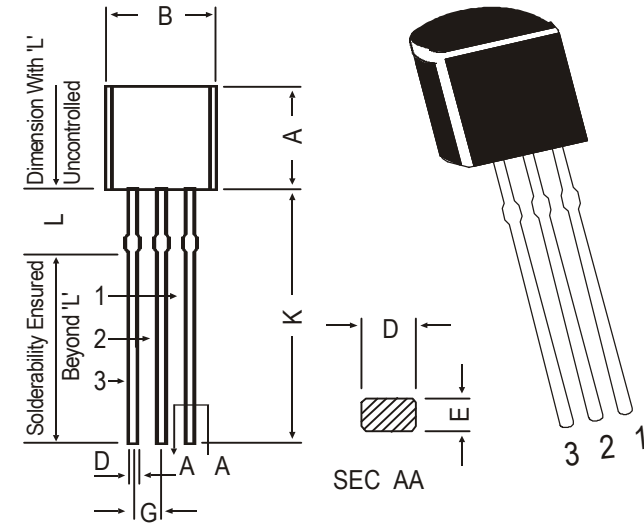
ELECTRICAL CHARACTERISTICS (Ta=25°C Unless Otherwise Specified)

DESCRIPTION	SYMBOL	TEST CONDITION	MIN	TYP	MAX	UNITS
Collector Emitter Voltage	BV_{CEO}	$I_C=1mA, I_B=0$	40			V
Collector Base Voltage	BV_{CBO}	$I_C=100\mu A, I_E=0$	40			V
EmitterBase Voltage	BV_{EBO}	$I_E=10\mu A, I_C=0$	4			V
Collector-Cut off Current	I_{CBO}	$V_{CB}=20V, I_E=0$			0.1	uA
Base Emitter On Voltage	$V_{BE(on)}$	$I_C=1mA, V_{CE}=10V$	0.65	0.7	0.74	V
DC Current Gain						
	BF240	$h_{FE}, I_C=1mA, V_{CE}=10V$	65		220	
	BF241		35		125	
Transition Frequency						
	BF240	$f_T, I_C=1mA, V_{CE}=10V, f=100MHz$		600		MHz
	BF241			470		MHz
Feedback Capacitance	C_{re}	$V_{CB}=10V, I_E=0, f=1MHz$		0.28	0.34	pF

*Pulse Test: Pulse Width $\leq 300\mu s$, Duty Cycle $\leq 2\%$.

TO-92 Plastic Package

TO-92 Transistors on Tape and Ammo Pack

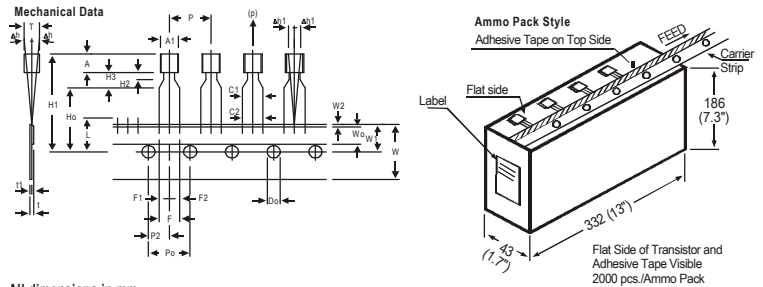


PIN CONFIGURATION

1. COLLECTOR
2. BASE
3. EMITTER

DIM	MIN.	MAX.
A	4.32	5.33
B	4.45	5.20
C	3.18	4.19
D	0.41	0.55
E	0.35	0.50
F	5 DEG	
G	1.14	1.40
H	1.14	1.53
K	12.70	—
L	1.982	2.082

All diminsions in mm.



All dimensions in mm

ITEM	SYMBOL	SPECIFICATION				REMARKS
		MIN.	NOM.	MAX.	TOL.	
BODY WIDTH	A1	4.0		4.8		
BODY HEIGHT	A	4.8		5.2		
BODY THICKNESS	T	3.9		4.2		
PITCH OF COMPONENT	P		12.7		± 1.0	
FEED HOLE PITCH	Po		12.7		± 0.3	CUMULATIVE PITCH ERROR 1.0 mm/20 PITCH
FEED HOLE CENTRE TO COMPONENT CENTRE	P2		6.35		± 0.4	TO BE MEASURED AT BOTTOM OF CLINCH
DISTANCE BETWEEN OUTER LEADS	F		5.08		+0.6 -0.2	
COMPONENT ALIGNMENT SIDE VIEW	Δh	0	1.0			AT TOP OF BODY
COMPONENT ALIGNMENT FRONT VIEW	Δh1	0	1.3			AT TOP OF BODY
TAPE WIDTH	W		18		± 0.5	
HOLD-DOWN TAPE WIDTH	Wo		6		± 0.2	
HOLE POSITION	W1		9		+0.7 -0.5	
HOLD-DOWN TAPE POSITION	W2		0.5		± 0.2	
LEAD WIRE CLINCH HEIGHT	Ho		16		± 0.5	
COMPONENT HEIGHT	H1		23.25			
LENGTH OF SNIPPED LEADS	L		11.0			
FEED HOLE DIAMETER	Do		4		± 0.2	
TOTAL TAPE THICKNESS	t		1.2			t1 0.3-0.6
LEAD - TO - LEAD DISTANCE	F1, F2		2.54		+0.4 -0.1	
STAND OFF	H2	0.45		1.45		
CLINCH HEIGHT	H3			3.0		
LEAD PARALLELISM	C1 - C2			0.22		
PULL - OUT FORCE	(P)	6N				

NOTES

1. Maximum alignment deviation between leads will not to be greater than 0.2mm.
2. Maximum non-cumulative variation between tape feed holes shall not exceed 1 mm in 20 pitches.
3. Holddown tape will not exceed beyond the edge(s) of carrier tape and there shall be no exposure of adhesive.
4. There will be no more than three (3) consecutive missing components in a tape.
5. A tape trailer, having at least three feed holes are provided after the last component in a tape.
6. Splices should not interfere with the sprocket feed holes.

Packing Detail

PACKAGE	STANDARD PACK		INNER CARTON BOX		OUTER CARTON BOX		
	Details	Net Weight/Qty	Size	Qty	Size	Qty	Gr Wt
TO-92 Bulk	1K/polybag	200 gm/1K pcs	3" x 7.5" x 7.5"	5K	17" x 15" x 13.5"	80K	23 kgs
TO-92 T&A	2K/ammo box	645 gm/2K pcs	12.5" x 8" x 1.8"	2K	17" x 15" x 13.5"	32K	12.5 kgs

Disclaimer

The product information and the selection guides facilitate selection of the CDIL's Discrete Semiconductor Device(s) best suited for application in your product(s) as per your requirement. It is recommended that you completely review our Data Sheet(s) so as to confirm that the Device(s) meet functionality parameters for your application. The information furnished in the Data Sheet and on the CDIL Web Site/CD is believed to be accurate and reliable. CDIL however, does not assume responsibility for inaccuracies or incomplete information. Furthermore, CDIL does not assume liability whatsoever, arising out of the application or use of any CDIL product; neither does it convey any license under its patent rights nor rights of others. These products are not designed for use in life saving/support appliances or systems. CDIL customers selling these products (either as individual Discrete Semiconductor Devices or incorporated in their end products), in any life saving/support appliances or systems or applications do so at their own risk and CDIL will not be responsible for any damages resulting from such sale(s).

CDIL strives for continuous improvement and reserves the right to change the specifications of its products without prior notice.



CDIL is a registered Trademark of
Continental Device India Limited

C-120 Naraina Industrial Area, New Delhi 110 028, India.
Telephone + 91-11-579 6150 Fax + 91-11-579 9569, 579 5290
e-mail sales@cdil.com www.cdil.com