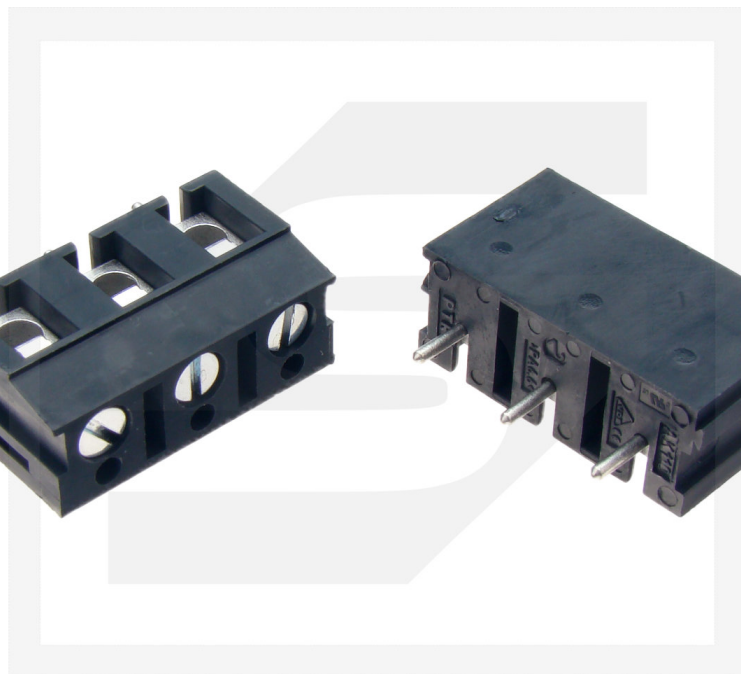




Złącze AK110/3DS-7.5-V 3 PIN RoHS rozstaw 7.5mm



Dane techniczne:

Nazwa: AK110/3DS-7.5-V

Raster : 7.5mm

Typ złącza: listwa zaciskowa do druku

Orientacja przestrzenna: kątowne 90°

Ilość torów: 3

Montaż mechaniczny: na PCB

Montaż elektryczny: THT, zacisk śrubowy

Wersja złącza: z ochroną przewodu

Złącze: zacisk

Prąd znamionowy: 24A

Wysokość: 12,5mm

Napięcie znamionowe: 500V

Długość: 22,5mm

Materiał styku: mosiądz

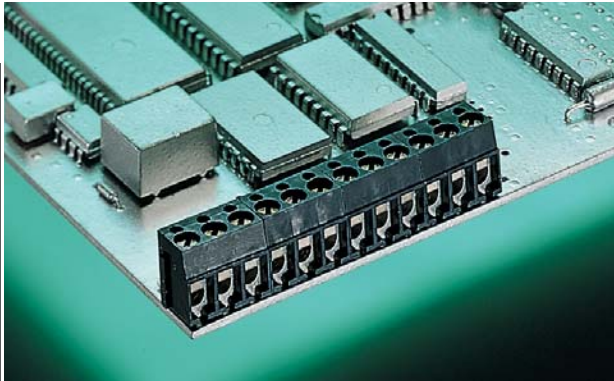
Głębokość: 9mm

Układ wyprowadzeń złącza: 1x2

Przekrój przewodu: 2,5mm²

Producent: PTR MESSTECHNIK

www.podzespoly-elektroniczne.pl





AK 104/.. DS - 5.0 - V - GREY

2-12 poles, Spacing 5,0 mm
insert required no. of poles ..

How to order see page 11

Ratings:

		
Rated voltage	300 V	250 V
Rated current	10 A	32 A (T60)
Wire Size	AWG 22-12	4,0 mm ²
Test voltage		2,0 kV
Rated Torque / Screw Size		0,8 Nm/M3

Max. Rated Cross Section

Single Wire (solid)	4,0 mm ²
Stranded Wire (flexible)	2,5 mm ²
Stranded wire with Ferrules	1,5 mm ²

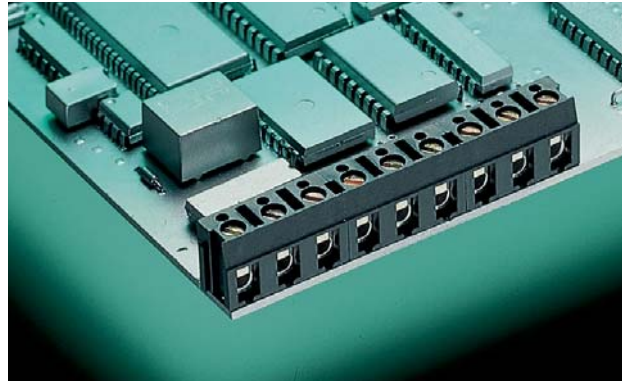
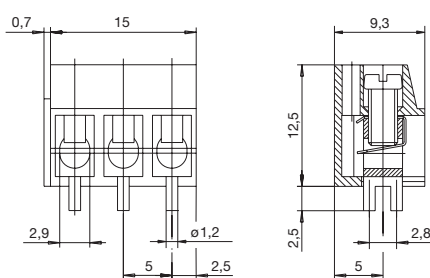
Dimensions

Spacing	5,0 mm
PCB hole diameter x pitch	2,0 mm x 2,8 mm
Stripped length	7,0 mm

Materials

Insulating material	PA
Flammability class	UL94 V-0
Temperature range	-30°C/+105°C
Terminal block	CuZn
Wire guard	stainless steel
Colour	grey
	RAL 7016

AK 104 VERTICAL





AK 110/.. DS - 7.5 - V - GREY

2-12 poles, Spacing 7,5 mm
insert required no. of poles ..

How to order see page 11

Ratings:

		
Rated voltage	300 V	500 V
Rated current	20 A	24 A (T60)
Wire Size	AWG 22-14	2,5 mm ²
Test voltage		3,0 kV
Rated Torque / Screw Size		0,5 Nm/M3

Max. Rated Cross Section

Single Wire (solid)	2,5 mm ²
Stranded Wire (flexible)	1,5 mm ²
Stranded wire with Ferrules	1,5 mm ²

Dimensions

Spacing	7,5 mm
PCB hole diameter x pitch	1,3 mm
Stripped length	7,0 mm

Materials

Insulating material	PA
Flammability class	UL94 V-0
Temperature range	-30°C/+105°C
Terminal block	CuZn
Wire guard	stainless steel
Colour	grey
	RAL 7016

AK 110 VERTICAL

